

150L

Features

1. Mixed state or color of two component fluid can be checked.
2. Intermittent fluid flow can be checked.
3. Can be connected to horizontal/vertical piping.
4. Mica plate is used for this type of sight glass for steam condensate.
5. The 150L Series sight glass come in a variety of materials, including ductile cast iron and cast stainless steel, which are available to choose from.

Specifications

Model	150L-F	150L-13S	150L-13F
Application	Cold and hot water, Oil, Other non-dangerous fluids		
Nominal size	65A-150A	15A-50A	15A-100A
Maximum working pressure	1.0 MPa		
Max. temperature	150°C		
Max. thermal shock	100°C		
Material	Body	Ductile cast iron	Cast stainless steel
	Glass	Hardened glass	
Connection	JIS 10K FF flanged	JIS Rc screwed	JIS 10K FF flanged



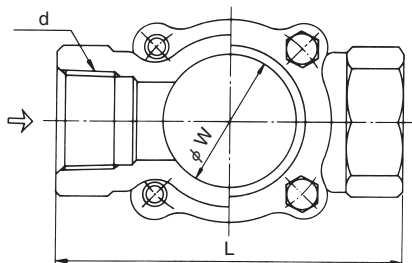
150L-F

- Available with mica plate for steam condensate (150LM-□□S•□□F).
- Available with protector (150LP-□□S•□□F).
- Glass part is consumable supply.

Dimensions (mm) and Weights (kg)

●150L-13S

Nominal size	d	L	W	Weight
15A	Rc 1/2	76	35	0.73
20A	Rc 3/4	89	35	0.82
25A	Rc 1	114	44	1.5
32A	Rc 1-1/4	127	53	2.3
40A	Rc 1-1/2	140	57	2.9
50A	Rc 2	162	73	5.8



●150L-F•13F

Nominal size	d	L	W	Weight	
				150L-F	150L-13F
15A	15	130	35	—	2.12
20A	20	130	35	—	2.47
25A	25	150	44	—	4.1
32A	32	160	53	—	5.4
40A	40	170	57	—	5.6
50A	50	200	73	—	9.7
65A	65	235	97	14.7	16.0
80A	73	235	97	15.1	16.5
100A	100	277	130	26.5	29.2
125A	125	336	155	36.8	—
150A	140	380	165	60.5	—

